

Children and Young People's NETWORK- Voluntary sector representation

Draft - November 2010

Page 1 Childrens Trust partnership groups

Barnet Children's Trust Board

Alison Kira – Catch 22
Dadia Conti –Community Barnet*
Exec Board Dadia Conti
This group is being revised

Youth services reports
See page 2

Barnet Voluntary Partnership
See page 3

Barnet Safeguarding Children Board
See Page 4

BRSI Strategy Group

Building Resilience Supporting Independence
Dadia Conti CYP Community Barnet
TOR being reviewed- reports from Extended
Schools Board, , Parenting Strategy, CAF

Participation Strategy Group

Peggy Sharp-IPOP
Audrey Montet – Community Barnet*
Allison Cooper – Muslim Youth Organisations
Harris Rosenberg – Jewish network

Health Groups - One report

Teenage Pregnancy Exec Group

Kirpal Dhadda Homestart*
Pennie Aston - GroOops

Healthy Schools

Cathy Goldin*

CAMHs Child and Adolescent Mental Health

Dadia Conti – Community Barnet*
Pennie Aston – GroOops
Liza Dresner – Resources for Autism

TAMHs Targeted Mental Health in schools
Dadia Conti

Childrens centres Management Group

Lisa Barry – BPSLA*
Trupti Makhani - Homestart

Children's Workforce Strategy

Lisa Barry BPSLA*
Eileen Martell Norwood
Andrew Baker – IPOP

CAF - Multi Agency Groups

East – Dadia Conti
West - Audrey Montet
South – Karen Lewis
Central – Barry Rawlings

Play Strategy Group

Jenny Daybell IPOP*
Maria Almey BPA
Sub groups - Playbuilders/BLF working groups

Youth Justice Matters

Alison Kira BA4Y*
Dadia Conti Community Barnet
Member ship review

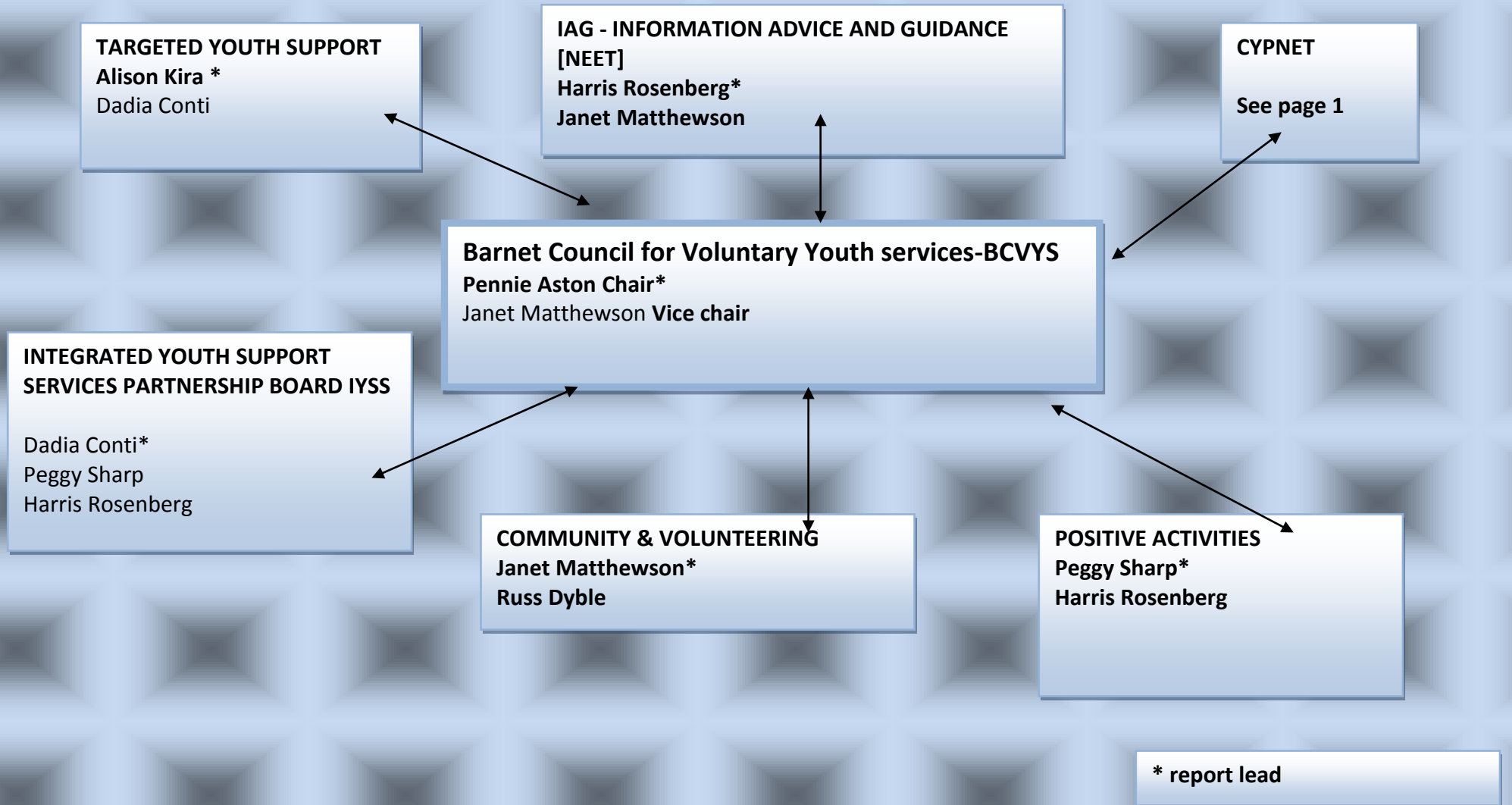
Also reports to
Safer Communities Board

Barnet Network of CYP Jewish
CYP Organisations

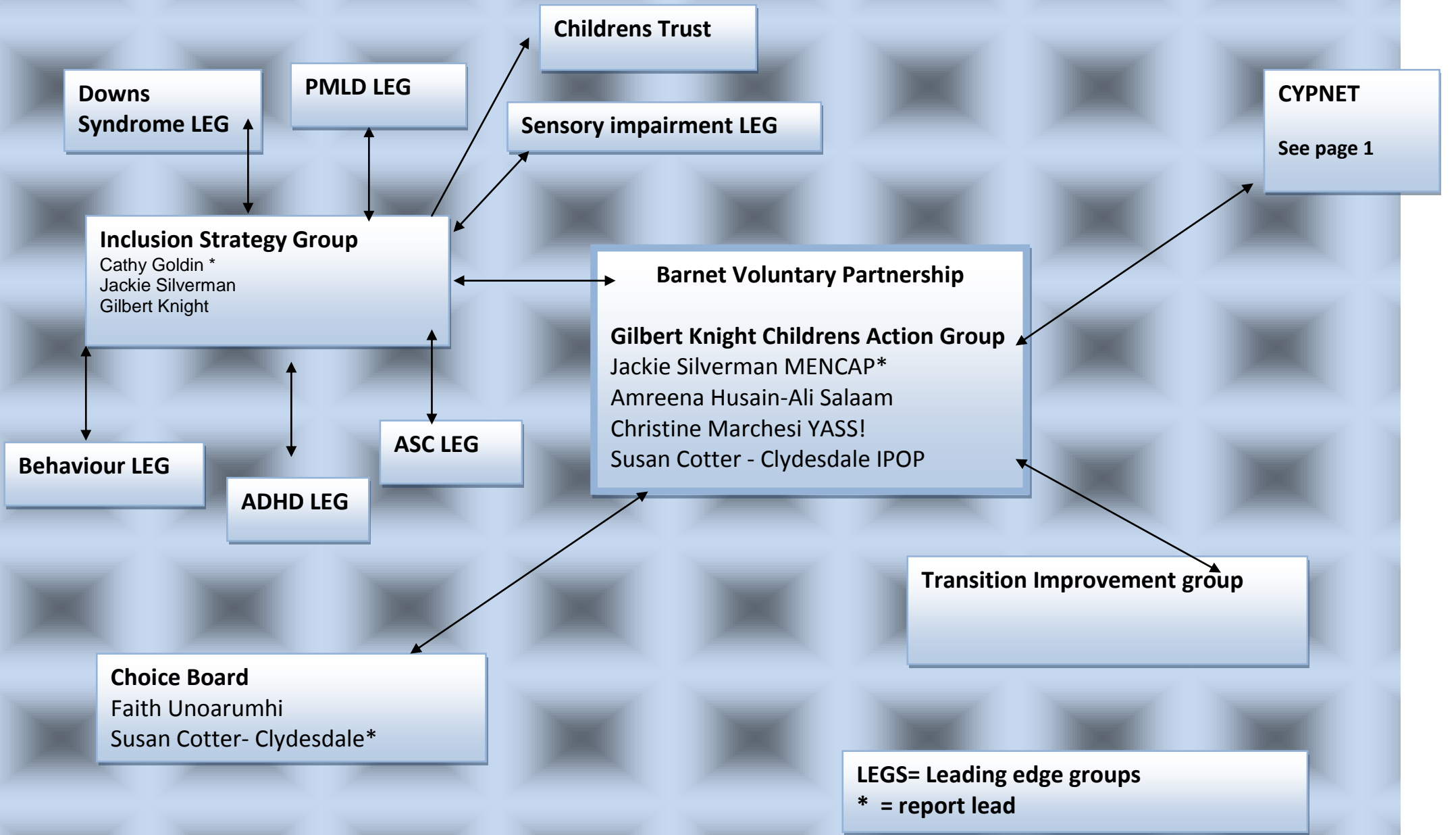
Barnet supplementary Schools
Forum

Barnet Muslim Engagement
Partnership

Page 2 Youth services reports - BCVYS



Page 3 Inclusion and disability reports - Barnet Voluntary



Junior Safeguarding Childrens Board
Reporting mechanism to be confirmed

Performance and quality (audit and monitoring)
Barry Rawlings*

CYPNET
See page 1

Barnet Safeguarding Children's Board
Dadia Conti

Training Sub
Lisa Barry
Eileen Martell*

Cross generational
Barry Rawlings
Peggy Sharp*

Faith and Culture
Barry Rawlings
Harris Rosenberg
Allison Cooper
Karen Walkden *

Professional advisory group
Barry Rawlings*
Eileen Martell

* report lead